

A COATED  
TECHNICAL TEXTILE  
SUB-DIVISION



## About Arvind

Pioneers of denim in India, Arvind began its journey in 1931. It was in response to Mahatma Gandhi's call for Swadeshi movement during the struggle for Indian Independence, when the Lalbhai family founded Arvind Mills, creating capacity to compete with the world's finest textile mills. Three brothers, Kasturbhai, Narottambhai and Chimanbhai, came together to produce international quality fabric using superior quality Indian cotton. Arvind Limited is an integrated solutions provider in textiles with strong fibre to fashion capabilities for a global customer base. It is also a design powerhouse implementing innovative concepts and generating intellectual property. Arvind is a textile to retail conglomerate with focus on fabrics, apparels, advanced materials, environmental solutions, telecom and Omni-channel commerce.

Today, Arvind stands tall as \$1.5 billion textile to retail conglomerate with 22,000+ employees focusing on textiles, apparels, advanced materials, environmental solutions, telecom and Omni-channel commerce. Company is headquartered in Ahmedabad, Gujarat (India) and ranks amongst the top suppliers of fabric worldwide.

The company strives every day to create opportunities beyond conventional boundaries and believes that the possibilities are endless.



## About Advance Materials Division

Arvind Advanced Materials has built state-of-the-art facilities for all its businesses. These facilities are vertically integrated, with most cases, providing stringently controlled, and quality oriented manufacturing. The facilities have been certified by global institutions and comply with the standards expected by domestic and global customers.

Arvind Advanced Materials operates more than 10 facilities spread across Gujarat, over a large area. The facilities have the best-in-class equipment, along with fully developed inspection, testing, and product development set-up. We have in-house innovation and product development teams who continuously work on the process, and products improvement and co-create new products in collaboration with leading research institutes.

### Glimpses of our facilities and capabilities

- Human Protection: Large facilities and capabilities from Spinning, Weaving, Garmenting to Finishing
- Composites: Full Suite of technology from Glass Fabric Weaving, Pultrusion, Hand Lamination, RTM, Filament Winding and Prepregs.
- Filtration: Needle Punched Felt, Woven Filter Media, and Made-Ups
- Technical Yarns: Capability to handle a variety of specialized yarns
- Coating and Lamination



# Research & Development

## Material Science Reimagined

Textiles represent a multifaceted material that extends beyond mere clothing applications. With over a century of expertise in the textile industry, Arvind Advanced Materials aims to explore additional domains within material science, utilizing textiles as a foundational element. At Advanced Materials, we recognize that material science plays a crucial role in fostering national growth and development. Our focus encompasses the development of innovative fibres, technologies, and products designed to address challenges in infrastructure, healthcare, energy, aviation, and various industrial sectors.

Our fabrics are manufactured using cutting-edge technology, underpinned by extensive knowledge, research, and an understanding of market demands. We are dedicated to providing a diverse array of eco-friendly solutions, striving for rapid advancement while prioritizing the improvement of future sustainability.

Arvind Advanced Materials Limited has inaugurated a cutting-edge Research and Development Centre, specifically aimed at creating high-performance, sustainable, and eco-friendly textile-coated composite materials. This facility boasts a skilled R&D team and a wide range of advanced experimental equipment. Furthermore, the company fosters enduring and stable collaborative research relationships with both industry and academic institutions, which promote the development and innovation of new products. We are committed to discovering coating solutions that meet the technical performance, sustainability, protection, and aesthetic needs of industrial applications.

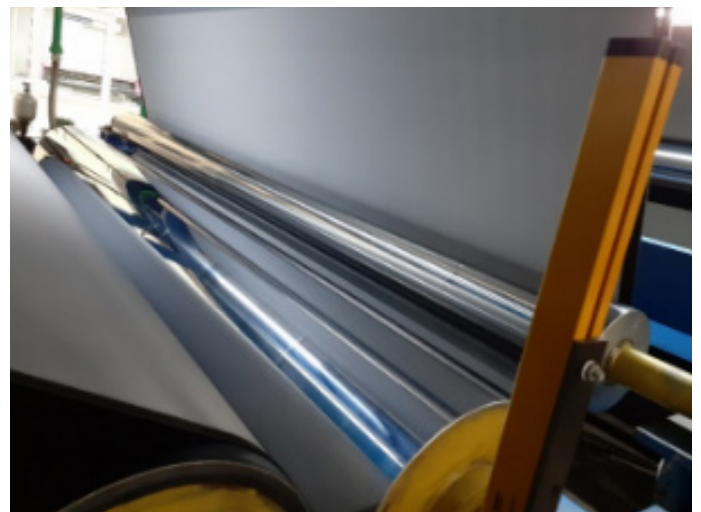




# Workshop

## Workshop

Arvind consistently positions itself at the leading edge of the industry. The advanced woven and coating machinery has been imported significantly earlier than that of many competitors. Our proficient and advanced coating technology assure a stable and high-quality product for our clients.





# Arvind Advance materials Limited: A Coating Sub-division



Our AAML Coating division specializes in the production of a diverse array of industrial and home technology fabrics. AAML provides an extensive selection of coated fabrics suitable for a variety of indoor and outdoor applications. These coated fabrics find utility in numerous sectors, including print media, Art & Digital Canvas, interior design, and outdoor architectural structures.

At Advanced Materials, we leverage cutting-edge technology to manufacture fabrics that ensure consistent quality and exceptional performance for our clients. Our fabrics are recognized for their outstanding functional properties in their respective application areas, making them a preferred choice among our customers due to their distinctive features.

PVC Coated Fabric

PVDF & Acrylic Lacquered

Fabrication

Digital Canvas

Art Canvas

Window Blinds

Signage / Print Media

PU Coated Fabrics – Canopy

Silicone Coated with Fiberglass and Nylon

## PVC COATED FABRIC



The PVC coated fabric represents a key product within the Coating Sub-division of Arvind AAML. The embossed materials, available in matte, semi-gloss, and super gloss finishes, exhibit exceptional performance in waterproofing, UV resistance, and various functional treatments, including flame retardancy, anti-fungal properties, and anti-static characteristics. These materials are designed to withstand extreme cold cracking temperatures ranging from -20 to -70 degrees Celsius.

Additionally, they comply with standards such as REACH, heavy metals regulations, and food-grade requirements, and are available in a wide array of colours and shades. The coating capabilities extend up to 3.2 meters for lower GSM fabrics (250 to 430 GSM), 3.1 meters for medium GSM fabrics (ranging from 450 to 800 GSM), and 2.5 meters and 1.55 meters for heavier GSM fabrics (830 to 1250 GSM). This versatility aids in reducing fabrication costs, providing Arvind with a competitive edge over many other coating manufacturers.

Furthermore, we provide a lacquered surface-treated PVC product utilizing acrylic and PVDF, which is part of an ongoing development program aimed at future innovations with new polymer finishes.

---

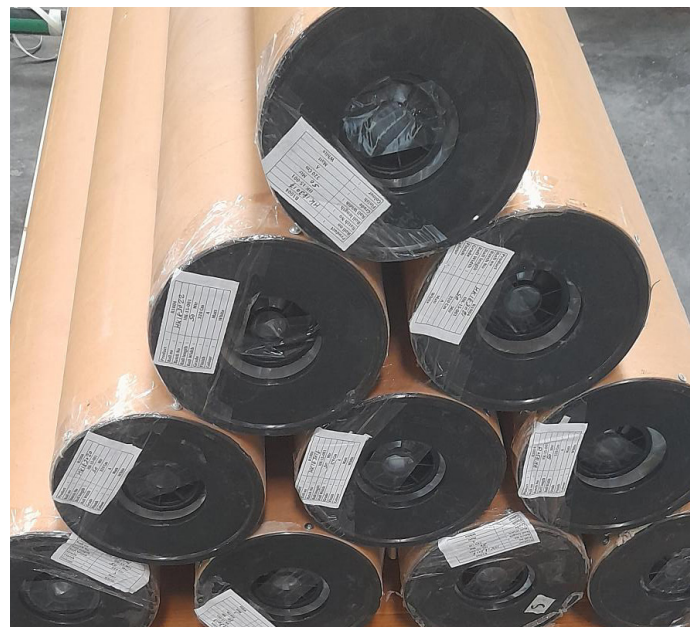
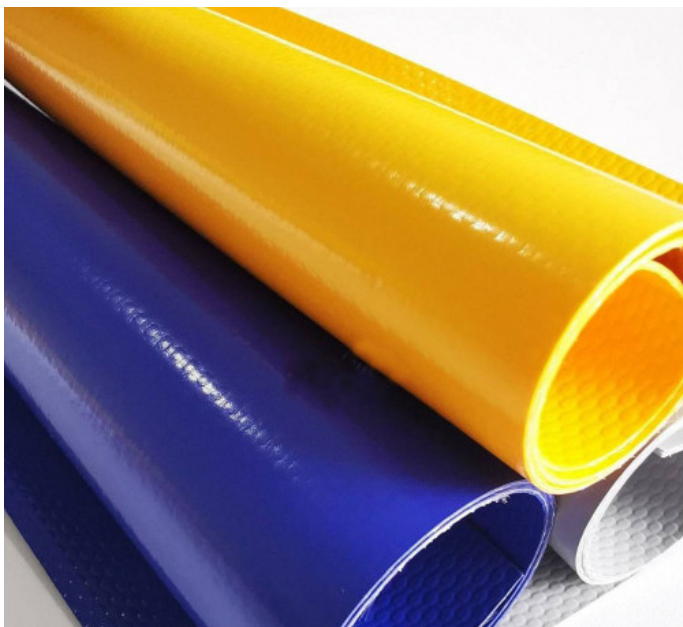
### Products

- Neo+
- Eco
- Neo+ ACC
- Disflamoll ( FR)
- Food safe
- Neo -Anti-static
- Blackouts with and Without FR
- Embossed – Gloss , Semi-Gloss , Matt



## Technical Specifications

PARAMETER		UNIT	TEST METHOD	SPECIFICATION					
Product Weight		Gsm	IS-7016 Part -I -1982	250	400	450	550	650	760
Thickness		mm	IS-7016 Part -I -1982	0.22	0.34	0.36	0.42	0.51	0.55
Tensile Strength	Warp	Kg/5 cm	IS-7016 Part -II -1981	200	240	240	240	220	220
	weft	Kg/5 cm	IS-7016 Part -II -1981	160	220	220	220	200	200
Tear Strength	Warp	kg	IS-7016 Part -III -1981	19 (Min)	28(Min)	28(Min)	28(Min)	26 (Min)	26 (Min)
	weft	kg	IS-7016 Part -III -1981	19 (Min)	28(Min)	28(Min)	26(Min)	24 (Min)	22(Min)
Adhesion Strength		Kg/5Cm	IS-7016 Part -V -1987	4.0 (Min)	5.0 (Min)	5.0 (Min)	5.0 (Min)	6.00 (Min)	6.00 (Min)
Water Proofness@220 PSI		-	IS-7016 Part -VII -1987	No Leak	No Leak	No Leak	No Leak	No Leak	No Leak





## PVDF & ACRYLIC LACQUERED



As a key player in the coated textile sector, our foremost aim is to deliver coated fabrics that meet both European and international standards. Arvind provides PVC-coated products that are subjected to finishing treatments with different Acrylic and PVDF polymers through a lacquering process to attain specific characteristics. This finish is available in both super gloss and matte appearances.

- A highly smooth finish that facilitates easy maintenance.
- Outstanding resistance to weathering.
- Protection against UV light.
- Elevated thermal and chemical resistance.
- Resistance to nuclear radiation.
- Superior mechanical strength and durability.
- High purity with effective moisture and fungus resistance.
- Elevated electrical resistivity.
- Low surface energy and a low coefficient of friction, resulting in a maintenance-free, dirt-resistant, and non-staining coating surface.
- Low refractive index.
- Flexibility and strength that allow for complete freedom in shape and size.



## Technical Specifications

PARAMETER		UNIT	TEST METHOD	SPECIFICATION		
Product Weight		Gsm	IS-7016 Part -I -1982	650	850	900
Thickness		mm	IS-7016 Part -I -1982	0.48	0.60	0.68
Tensile Strength	Warp	Kg/5 cm	IS-7016 Part -II -1981	230	240	400
	weft	Kg/5 cm	IS-7016 Part -II -1981	220	220	330
Tear Strength	Warp	kg	IS-7016 Part -III -1981	300 (Min)	350 (Min)	600 (Min)
	weft	kg	IS-7016 Part -III -1981	260 (Min)	300 (Min)	550 (Min)
Adhesion Strength		Kg/5Cm	IS-7016 Part -V -1987	5.5 (Min)	7.0 (Min)	8.5 (Min)
Water Proofness@220 PSI		-	IS-7016 Part -VII -1987	No Leak	No Leak	No Leak



## FABRICATIONS



Arvind provides an extensive selection of coated fabricated products that can be welded using a hot air sealing system, suitable for a wide array of applications including truck covers, water storage tanks, agricultural covers, hanger covers, tents, and side covers, among others.

Our vision is to become a world-class leader in the technical textile industry by manufacturing and supplying high-quality, customized technical coated fabricated products for both industrial and domestic applications. We are committed to achieving complete customer satisfaction by delivering precise products through innovative solutions, addressing diverse market needs with meticulously designed products that serve practical purposes, all at globally competitive prices.

Currently, we are engaged in projects focused on inflatable and circular PVC fabrication for various industrial applications.

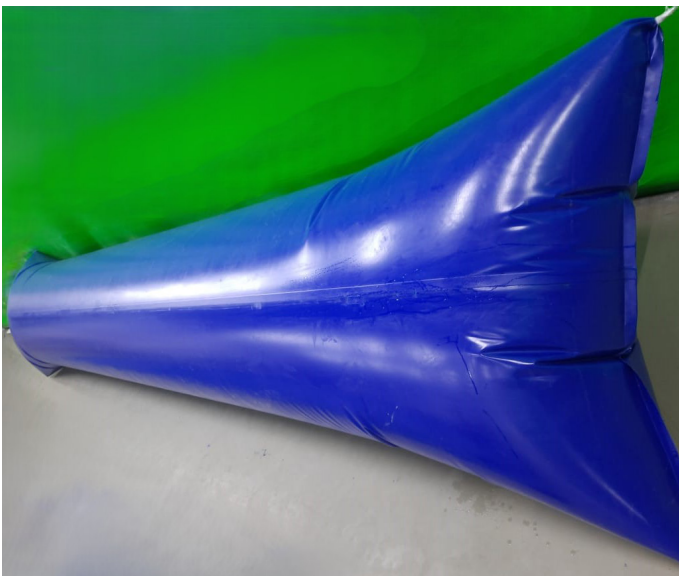
---

### Products

- Tarp
- Water Pillow Tank
- Hanger Cover
- Agriculture cover / fumigations Cover
- Shipping container
- Pool Liner



## Applications Images





# ART CANVAS



Arvind's art canvases are characterized by their Gesso / acrylic multiple primed coatings, which are acid-free and available in medium to high grain textures with various GSM options. These canvases comply with Proposition 65, REACH, and RoHS regulations, and are free from heavy metals.

The white and black canvases are constructed from a variety of base substrates, including cotton and poly-cotton blended with polymers. Surface coatings, to effectively support both oil and water-based art paintings.

---

## Products

- C1015-ACWDP – 250 ( Art canvas White Double Primed 260+/-15 GSM )
- C1006-ACWTP – 250 ( Art canvas White Triple Primed 250 GSM )
- C1016-ACWDP – 275 ( Art canvas White Double Primed 275 GSM )
- C1007 - ACWTP – 310 ( Art canvas White Triple Primed 310 GSM )
- C1023-ACWPTP-450 ( Art canvas White Triple Primed 450GSM )
- C1015ACBDP -250 ( Art canvas Black Double Primed 260+/-15 GSM )



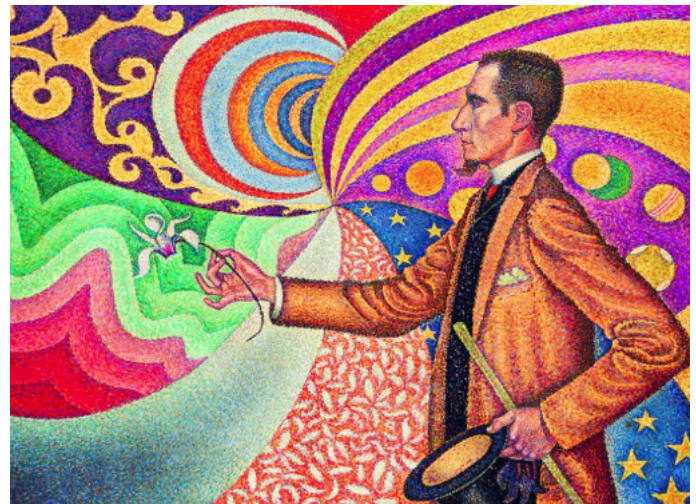
## Technical Specifications

PARAMETER		UNIT	TEST METHOD	SPECIFICATION					
PRODUCT CODE				C1015-ACWDP	C1006-ACWTP	C1007-ACWTP	C1007-ACWTP	C1023-ACWPTP	C1015-ACBDP
Product Weight		Gsm	IS-7016 Part -I -1982	250	250	275	310	450	260
Thickness		mm	IS-7016 Part -I -1982	0.48	0.48	0.48	0.55	0.55	0.48
Tensile Strength	Warp	Kg/5 cm	IS-7016 Part -II -1981	35	35	35	30	90	35
	weft	Kg/5 cm	IS-7016 Part -II -1981	20	20	20	20	30	20
Tear Strength	Warp	kg	IS-7016 Part -III -1981	2.50	2.50	2.50	2.50	3.50	2.00
	weft	kg	IS-7016 Part -III -1981	2.00	2.00	2.00	2.00	3.00	2.00

With 10 % Acrylic colour +90 % Water



With 10% Ultramarine +90% Turpentine oil



With 50% Linseed oil+ 50% Ultramarine color



With 90% Acryliccolor +10% Water



# DIGITAL CANVAS



Digital Canvas, as an important elements of digital advance materials technology by Arvind Advance materials Limited.

The Poly-Cotton, cotton, and polyester canvases are crafted using appropriate polymers that facilitate printing with a variety of inks and technologies, including UV, latex, eco-solvent, solvent, and water-based inks. Additionally, these canvases offer multiple surface finish options, such as matte, gloss, and semi-gloss.

---

## Products

- RO40S
- RO40-SEMI-GLOSS
- RO40-MATT
- R1004-MATT
- A1060-PET CANVAS
- A1064-PET CANVAS



## Technical Specifications

PARAMETER		UNIT	TEST METHOD	SPECIFICATION					
PRODUCT CODE				R040S	R040-MATT	R040-SG	R1004-MATT	A1060-SG	A1064-MATT
Product Weight		Gsm	IS-7016 Part -I -1982	360	345	350	360	220	285
Thickness		mm	IS-7016 Part -I -1982	0.42	0.48	0.48	0.42	0.24	0.40
Tensile Strength	Warp	Kg/5 cm	IS-7016 Part -II -1981	100	100	100	120	140	150
	weft	Kg/5 cm	IS-7016 Part -II -1981	50	50	50	50	100	120
Tear Strength	Warp	kg	IS-7016 Part -III -1981	5.00	5.00	5.00	8.00	6.00	15.00
	weft	kg	IS-7016 Part -III -1981	4.00	3.00	4.00	4.00	4.00	13.00

### Eco-solvent



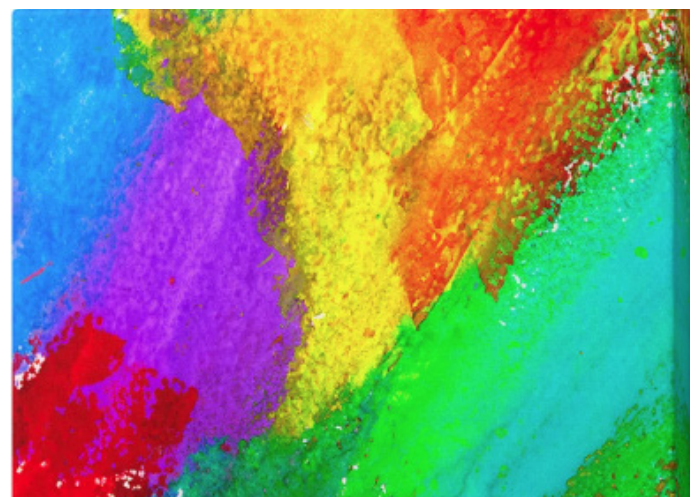
### Solvent



### UV



### Latex





# WINDOW BLINDS



Arvind Window Covers presents a diverse range of window treatment products designed to elevate the aesthetic appeal and ambiance of both residential and commercial spaces.

Crafted from high-quality materials, these window coverings guarantee durability and longevity. The fabrics utilized are polymer-coated with paste and foam, providing the desired texture and drapability, complemented by a variety of attractive designs. Furthermore, these products comply with the standards set by Proposition 65, REACH, and are free from heavy metals.

---

## Products

- A1027-Blackout
- A334 -Shear Blinds
- A1002 -Translucent
- A1027-Translucent
- A1055 - Jacquard roller blinds
- A1028- Tucson
- A314-Yuma



## Technical Specifications

PARAMETER		UNIT	TEST METHOD	SPECIFICATION					
PRODUCT CODE				A1027-EBO	A334-SHEAR	A1002-TRANSL	A1055-JRB	A1028-TUCSON	A314-YUMA
Product Weight		Gsm	IS-7016 Part -I -1982	355	80	200	360	265	320
Thickness		mm	IS-7016 Part -I -1982	0.35	0.22	0.28	0.50	0.32	0.40
Tensile Strength	Warp	Kg/5 cm	IS-7016 Part -II -1981	140	25	90	120	75	120
	weft	Kg/5 cm	IS-7016 Part -II -1981	130	50	70	90	35	60
Tear Strength	Warp	kg	IS-7016 Part -III -1981	5.00	2.00	5.00	8.00	5.00	4.00
	weft	kg	IS-7016 Part -III -1981	4.00	3.00	4.00	15.00	4.00	3.00

Roman blinds



Roller blinds



Shear Blinds



Translucent



## PRINT MEDIA



It is our conviction that we have a duty to reduce our environmental impact. Consequently, we direct our research and development investments towards creating more sustainable products. Arvind provides eco-friendly alternatives for signage products, replacing PVC flex with polymer-coated materials suitable for Front-lit, Backlit, and Non-Lit Black back options, utilizing substrates made from polyester, poly-cotton, and cotton.

---

### Products

- C096-Frontlit
- C094-Backlit
- A1028-Frontlit ( A313 Pro )
- Espresso – Backlit



## Technical Specifications

PARAMETER		UNIT	TEST METHOD	SPECIFICATION			
PRODUCT CODE				C096-FRONTLIT	C094-BACK LIT	A313-PRO FRONT LIT	EXPRESSO - BACK LIT
Product Weight		Gsm	IS-7016 Part -I -1982	200	180	125	140
Thickness		mm	IS-7016 Part -I -1982	0.25	0.24	0.16	0.17
Tensile Strength	Warp	Kg/5 cm	IS-7016 Part -II -1981	95	80	70	75
	weft	Kg/5 cm	IS-7016 Part -II -1981	40	40	30	30
Tear Strength	Warp	kg	IS-7016 Part -III -1981	2.00	2.50	3.50	3.50
	weft	kg	IS-7016 Part -III -1981	1.50	2.00	3.00	3.00





# POLYURETHANE (PU) COATING – CANOPY



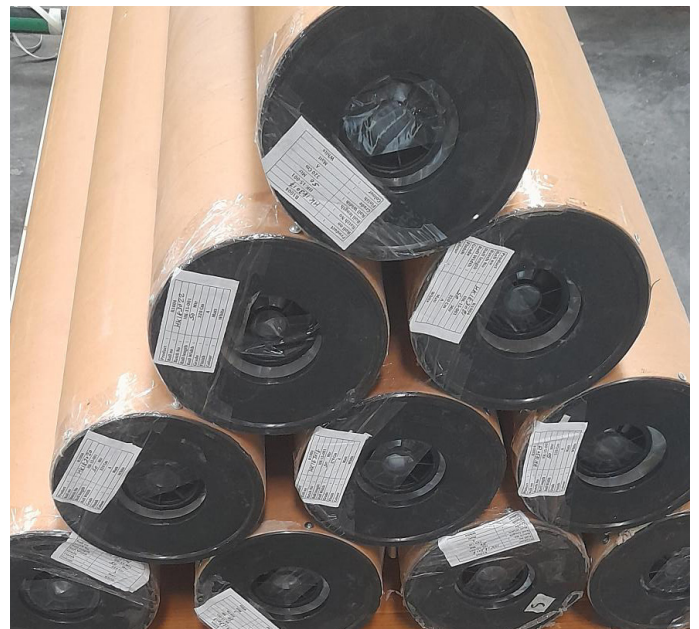
## Products

- A340- FR+WR+WP
- A375-WP+WR
- Nylon – WP+WR



## Technical Specifications

PARAMETER		UNIT	TEST METHOD	SPECIFICATION	
				A340 -FRWPWR	A375-WPWR
PRODUCT CODE					
Product Weight		Gsm	IS-7016 Part -I -1982	500	500
Thickness		mm	IS-7016 Part -I -1982	0.64	0.65
Tensile Strength	Warp	Kg/5 cm	IS-7016 Part -II -1981	250	340
	weft	Kg/5 cm	IS-7016 Part -II -1981	180	120
Tear Strength	Warp	kg	IS-7016 Part -III -1981	35	35
	weft	kg	IS-7016 Part -III -1981	30	20
Flame Retardent		Sec	IS-11871 METHOD A	PASS	N/A
Water Proofness		mm	ISO-811:1981	≥1000	≥1000
Water Repellency		%	AATCC22	≥80	≥80





# Innovating Materials. Inspiring Possibilities.

At Arvind Advanced Materials, we don't just manufacture coated fabrics — we engineer performance, durability, and design into every fiber.

Whether it's sheltering lives, carrying ideas, or expressing creativity on canvas — our materials shape the world around you.

## **Why Choose Arvind?**

- Unmatched Expertise: 90+ years of textile innovation
- Customized Solutions: Tailored to your exact application
- Future-Ready Tech: Eco-conscious, compliant, and cutting-edge
- Global Trust: Serving leading brands across 30+ countries

ARVIND

Advanced Materials

Arvind Advanced Materials Limited

Santej, P.O.: Khatraj, Tal: Kalol, Dist.: Gandhinagar - 382 721, India.

Email: [coating@arvind.in](mailto:coating@arvind.in) | Phone: +91 2764 675687 | Web: [www.arvind-amd.com](http://www.arvind-amd.com)